



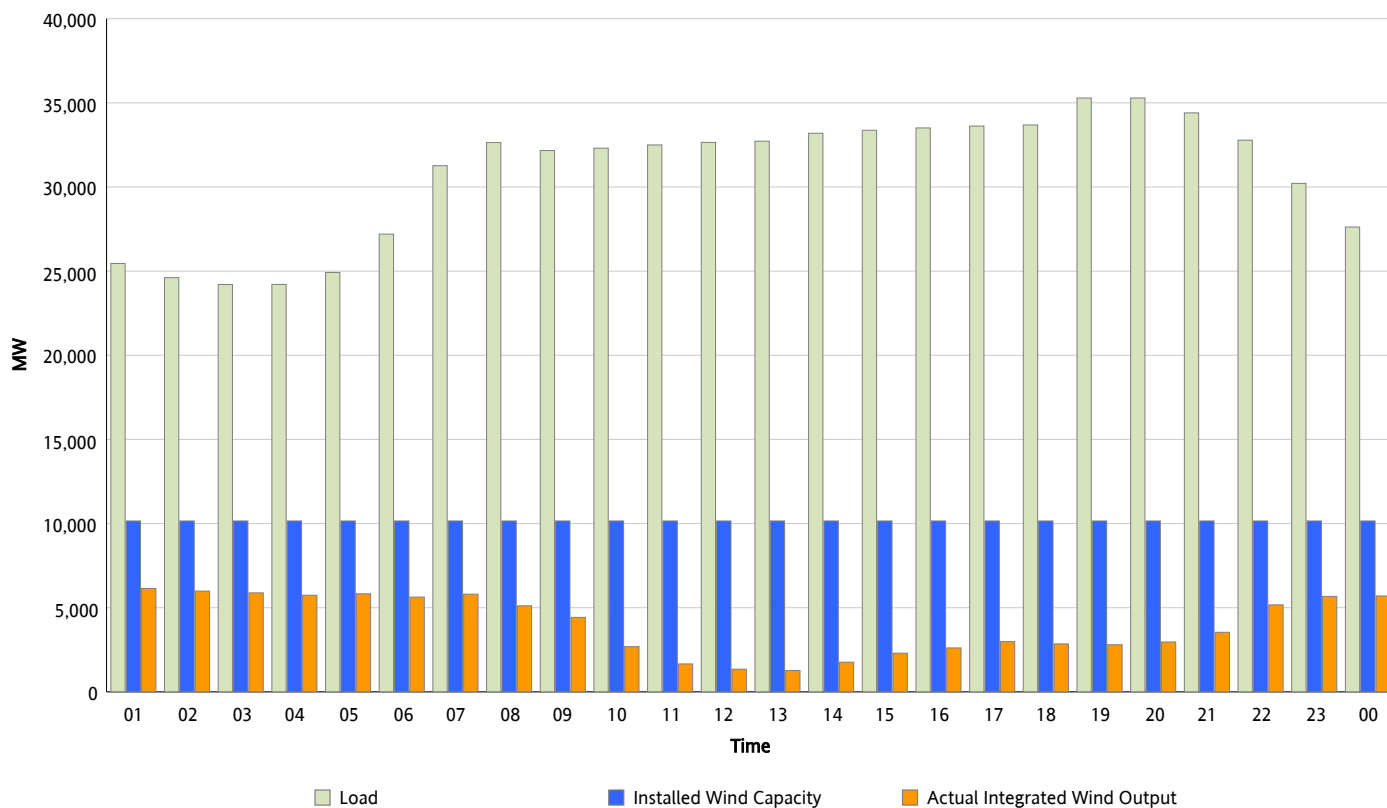
ERCOT Grid Operations

Wind Integration Report : 01/24/2013

Peak Load	35,288 MW
Load Peak Hour (HE)	20
Wind Over Peak	2,965 MW
Wind Record 12/25/12	8,638 MW
Max Wind Value*	6,253 MW
Wind Peak Time	00:17
Wind Integration %	24.35 %

Hourly Average Actual Load vs. Actual Wind Output

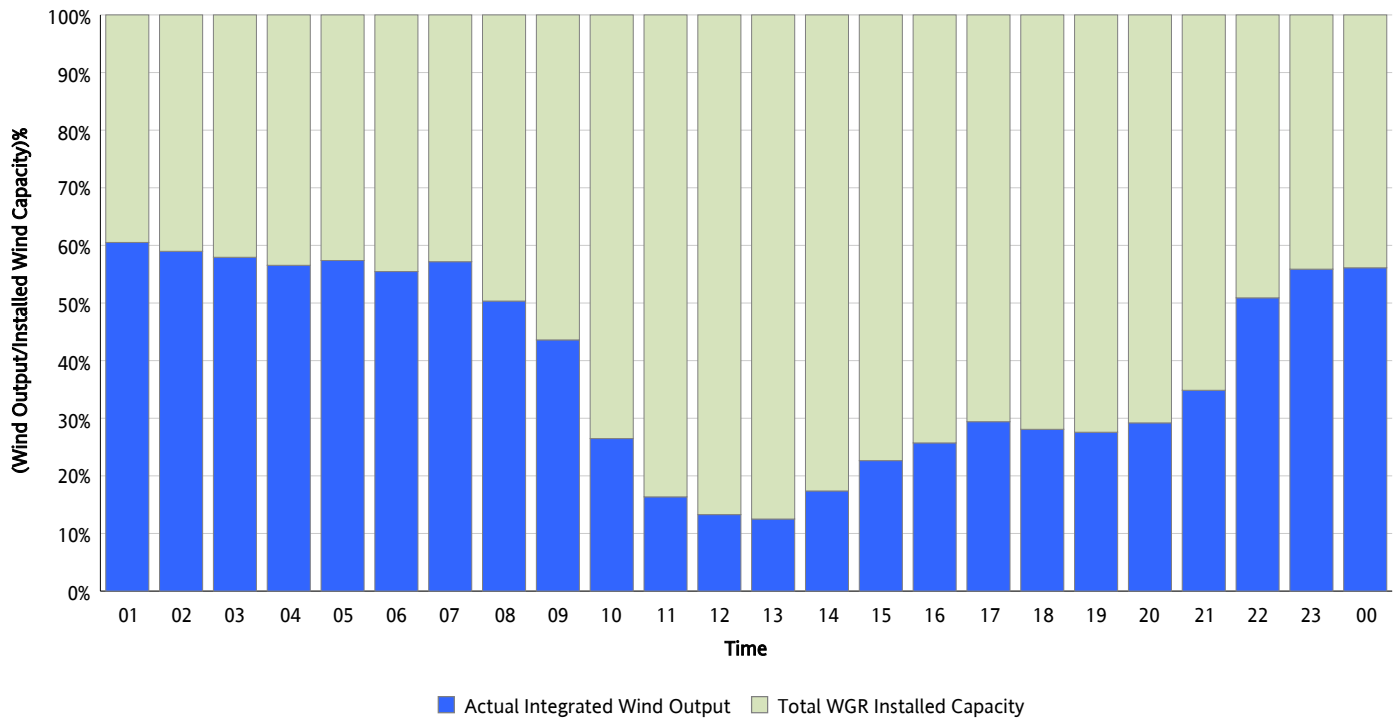
01/24/2013



* Wind Record and Wind Max represent instantaneous values and the rest of the values are integrated over the hour

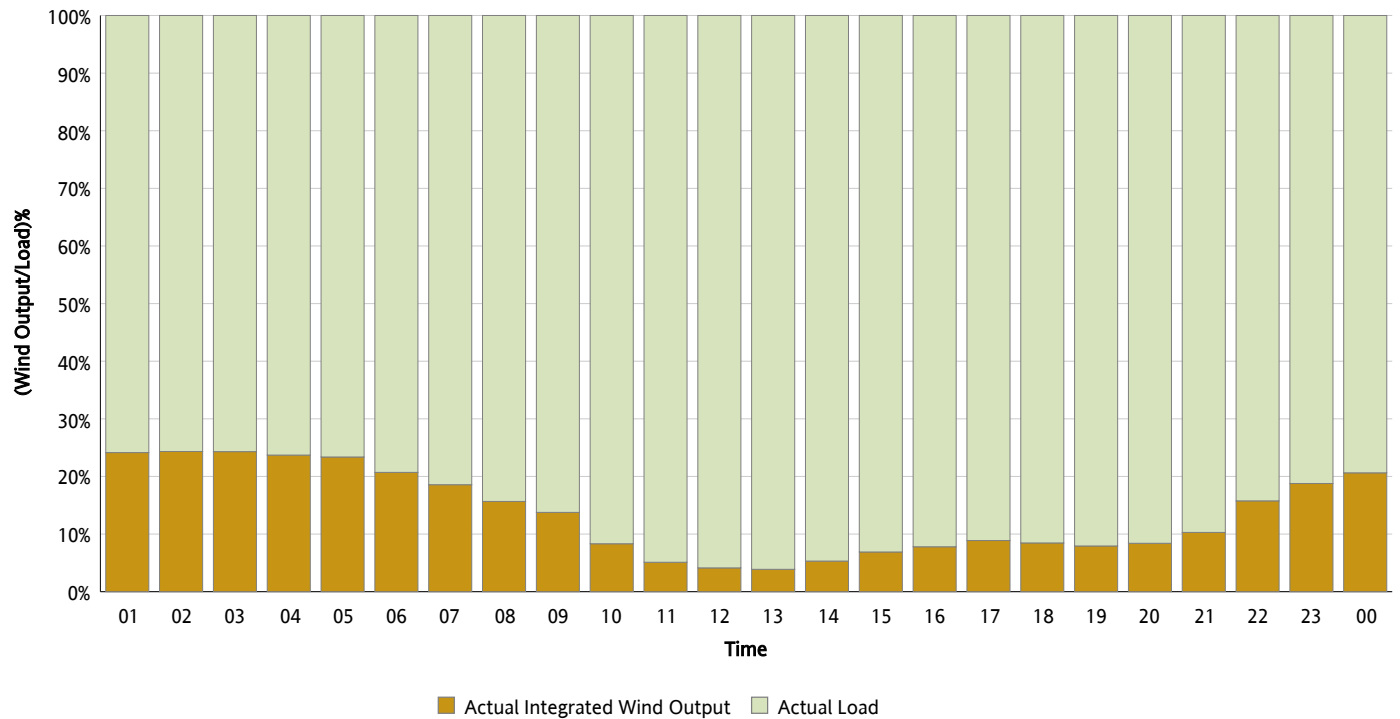
Actual Wind Output as a Percentage of the Total Installed Wind Capacity

01/24/2013



Actual Wind Output as a Percentage of the ERCOT Load

01/24/2013



ERCOT Load vs. Actual Wind Output

01/17/2013 - 01/24/2013

